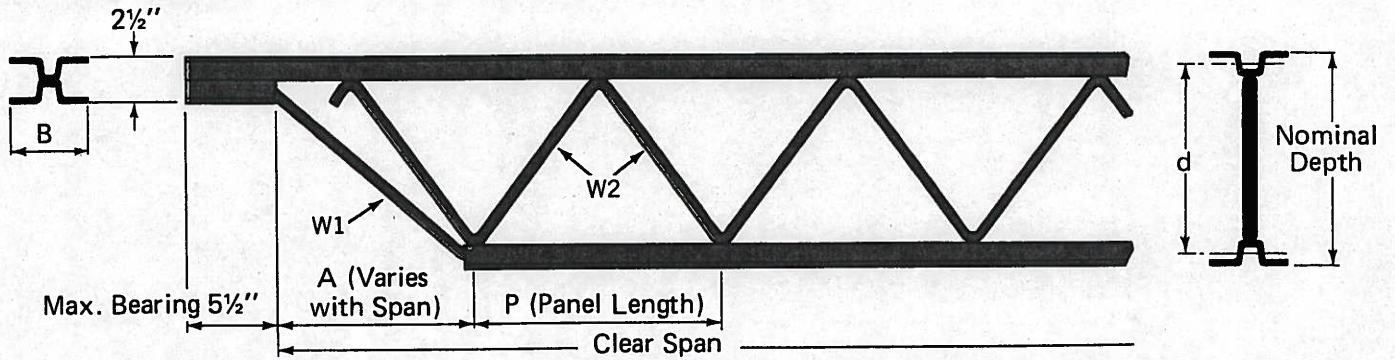


J-Series

Shortspan Joists Dimensions and Properties



Joist Designation *	Nominal Depth	Effective Depth "d"	Section Number		A Varies With Span		Bar Web Diameter		B Bearing Width	P Panel Length	Approx. Weight per ft. **	Joist Moment of Inertia ***
			Top Chord	Bottom Chord	Min.	Max.	W1	W2				
J-Series	in.	in.			in.	in.	in.	in.	in.	in.	lbs.	in. ⁴
8 J 3	8	7.10	3T	3B	20	31	1 ¹ / ₁₆	3 ¹ / ₈	3 ³ / ₈	24	4.4	12
10 J 3	10	9.10	3T	3B	20	31	1 ¹ / ₁₆	3 ¹ / ₈	3 ³ / ₈	24	5.0	22
10 J 4	10	9.14	4T	4B	20	31	1 ¹ / ₁₆	3 ¹ / ₈	4	24	6.1	26
12 J 3	12	11.10	3T	3B	19	30	1 ¹ / ₁₆	3 ¹ / ₈	3 ³ / ₈	24	5.2	34
12 J 4	12	11.14	4T	4B	19	30	1 ¹ / ₁₆	1 ¹ / ₁₆	4	24	6.2	39
12 J 5	12	11.15	5X	5B	19	30	1 ¹ / ₁₆	1 ¹ / ₁₆	4 ¹ / ₂	24	7.1	47
12 J 6	12	11.13	6X	6B	19	30	1 ¹ / ₁₆	1 ¹ / ₁₆	5 ¹ / ₂	24	8.2	56
14 J 3	14	13.10	3T	3B	18	29	1 ¹ / ₁₆	3 ¹ / ₈	3 ³ / ₈	24	5.5	46
14 J 4	14	13.14	4T	4B	18	29	1 ¹ / ₁₆	1 ¹ / ₁₆	4	24	6.5	54
14 J 5	14	13.15	5X	5B	18	29	1 ¹ / ₁₆	1 ¹ / ₁₆	4 ¹ / ₂	24	7.4	65
14 J 6	14	13.13	6X	6B	18	29	1 ¹ / ₁₆	3 ¹ / ₈	5 ¹ / ₂	24	8.6	77
14 J 7	14	13.24	7T	7B	18	29	1 ¹ / ₁₆	3 ¹ / ₈	5 ¹ / ₂	24	10.0	94
16 J 4	16	15.14	4T	4B	19	30	1 ¹ / ₁₆	1 ¹ / ₁₆	4	24	6.6	72
16 J 5	16	15.14	5T	5B	19	30	1 ¹ / ₁₆	3 ¹ / ₈	4 ¹ / ₂	24	7.8	85
16 J 6	16	15.12	6T	6B	19	30	1 ¹ / ₁₆	3 ¹ / ₈	5 ¹ / ₂	24	8.6	101
16 J 7	16	15.24	7T	7B	19	30	1 ¹ / ₁₆	3 ¹ / ₈	5 ¹ / ₂	24	10.4	125
16 J 8	16	15.24	8T	8B	19	30	1 ¹ / ₁₆	3 ¹ / ₈	5 ¹ / ₂	24	11.6	141
18 J 5	18	17.14	5T	5B	21	32	1 ¹ / ₁₆	3 ¹ / ₈	4 ¹ / ₂	24	8.0	109
18 J 6	18	17.12	6T	6B	21	32	1 ¹ / ₁₆	3 ¹ / ₈	5 ¹ / ₂	24	9.2	130
18 J 7	18	17.24	7T	7B	21	32	1 ¹ / ₁₆	3 ¹ / ₈	5 ¹ / ₂	24	10.4	160
18 J 8	18	17.24	8T	8B	21	32	1 ¹ / ₁₆	3 ¹ / ₈	5 ¹ / ₂	24	11.6	181
20 J 5	20	19.14	5T	5B	23	34	1 ¹ / ₁₆	3 ¹ / ₈	4 ¹ / ₂	24	8.4	136
20 J 6	20	19.12	6T	6B	23	34	1 ¹ / ₁₆	3 ¹ / ₈	5 ¹ / ₂	24	9.6	162
20 J 7	20	19.24	7T	7B	23	34	1 ¹ / ₁₆	3 ¹ / ₈	5 ¹ / ₂	24	10.7	199
20 J 8	20	19.24	8T	8B	23	34	1 ¹ / ₁₆	3 ¹ / ₈	5 ¹ / ₂	24	12.2	225
22 J 6	22	21.12	6T	6B	26	37	1 ¹ / ₁₆	3 ¹ / ₈	5 ¹ / ₂	24	9.7	197
22 J 7	22	21.24	7T	7B	26	37	1 ¹ / ₁₆	3 ¹ / ₈	5 ¹ / ₂	24	10.7	243
22 J 8	22	21.24	8T	8B	26	37	1 ¹ / ₁₆	3 ¹ / ₈	5 ¹ / ₂	24	12.0	274
24 J 6	24	23.12	6T	6B	28	39	1 ¹ / ₁₆	3 ¹ / ₈	5 ¹ / ₂	24	10.3	237
24 J 7	24	23.24	7T	7B	28	39	1 ¹ / ₁₆	3 ¹ / ₈	5 ¹ / ₂	24	11.5	290
24 J 8	24	23.24	8T	8B	28	39	1 ¹ / ₁₆	3 ¹ / ₈	5 ¹ / ₂	24	12.7	328

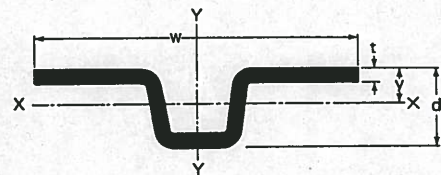
*Steel for J-Series joist chords and webs is tested in accordance with "Section 3. Materials" of the SJI Specifications for Open Web Steel Joists, J- and H-Series (36,000 psi minimum yield strength).

**The weights per foot as shown in these tables are approximate only. Such weights are shown only for the convenience of the designer. They cannot be used in figuring prices or determining shipping weights.

***See page 7 for computation of deflections due to uniform loading.

Chord properties

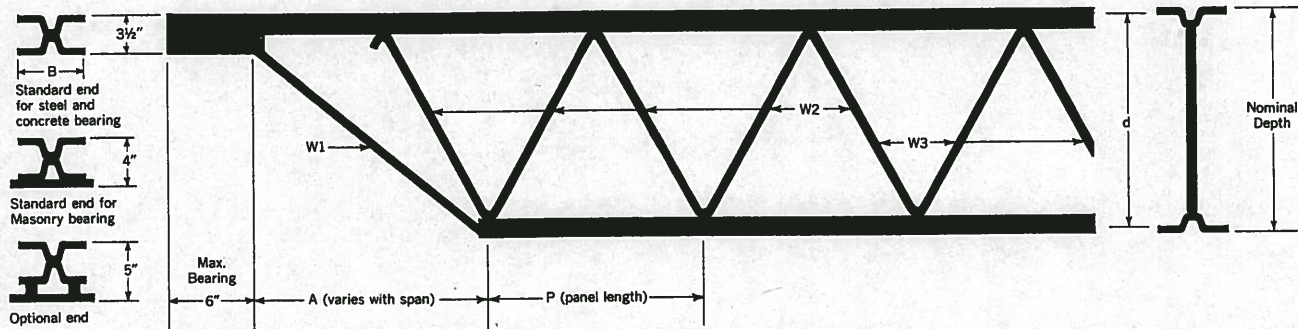
Sec. No.	Area sq. in.	t in.	d in.	y in.	w in.	X-X Axis		Y-Y Axis		Sec. No.
						I	r	I	r	
3T	.562	.125	1.125	.43	3 ³ / ₁₆	.09	.40	.43	.87	3T
4T	.712	.156	1.156	.43	3 ³ / ₁₆	.11	.40	.59	.91	4T
5T	.843	.188	1.188	.44	3 ³ / ₁₆	.14	.40	.71	.92	5T
5X	.878	.188	1.188	.43	3 ³ / ₁₆	.14	.40	.82	.97	5X
6T	.997	.219	1.219	.45	3 ³ / ₁₆	.16	.41	.93	.96	6T
6X	1.025	.219	1.219	.44	3 ³ / ₁₆	.17	.40	1.02	1.00	6X
7T	1.243	.219	1.219	.38	4 ¹ / ₁₆	.19	.39	2.01	1.27	7T
8T	1.406	.250	1.250	.39	4 ¹ / ₁₆	.21	.39	2.36	1.29	8T
3B	.500	.125	1.125	.47	2 ¹ / ₁₆	.08	.40	.28	.75	3B
4B	.554	.125	1.125	.43	3 ¹ / ₁₆	.09	.40	.41	.86	4B
5B	.659	.141	1.141	.42	3 ¹ / ₁₆	.10	.40	.58	.94	5B
6B	.795	.172	1.172	.43	3 ¹ / ₁₆	.13	.40	.70	.94	6B
7B	.945	.172	1.172	.38	4 ¹ / ₁₆	.14	.39	1.31	1.18	7B
8B	1.078	.188	1.188	.37	4 ¹ / ₁₆	.16	.39	1.70	1.25	8B



1972 - ARMC0 - SHEFFIELD

DJ-Series

**Deep Shortspan Joists
Dimensions and Properties**



Joist Designation *	Nominal Depth	Effective Depth "d"	Section Number		A Varies with Span		Bar Web Diameter			B Brg. Width	P Panel Lgth.	Approx. Wt. Per Foot **	Joist Moment of Inertia ***
			Top Chord	Bot. Chord	Min.	Max.	W1	W2	W3				
DJ-Series	in.	in.			in.	in.	in.	in.	in.	in.	in.	lbs.	in. ⁴
18DJ8	18	16.66	8U	8L	18	29	1 1/64	3/4	11/16	6	24	11	170
18DJ9	18	16.69	9U	9L	18	29	1 1/64	23/32	23/32	6	24	13	206
18DJ10	18	16.70	10U	10L	18	29	1 1/64	13/16	23/32	6	24	14	228
20DJ8	20	18.66	8U	8L	21	32	1 1/64	49/64	23/32	6	24	11	213
20DJ9	20	18.69	9U	9L	21	32	1 1/64	51/64	23/32	6	24	13	258
20DJ10	20	18.70	10U	10L	21	32	1 1/64	13/16	3/4	6	24	14	286
22DJ8	22	20.66	8U	8L	22	33	1 1/64	25/32	23/32	6	24	11	261
22DJ9	22	20.69	9U	9L	22	33	1 1/64	13/16	3/4	6	24	13	316
22DJ10	22	20.70	10U	10L	22	33	1 1/64	27/32	49/64	6	24	14	350
22DJ11	22	20.70	11U	11L	22	33	1 1/64	7/8	51/64	7	24	16	399
24DJ8	24	22.66	8U	8L	25	36	1 1/64	13/16	3/4	6	24	12	314
24DJ9	24	22.69	9U	9L	25	36	1 1/64	27/32	49/64	6	24	14	380
24DJ10	24	22.70	10U	10L	25	36	1 1/64	7/8	51/64	6	24	15	421
24DJ11	24	22.70	11U	11L	25	36	1 1/64	57/64	27/32	7	24	17	480
26DJ7	26	24.67	7U	7L	27	38	1 1/64	27/32	49/64	6	24	11	352
26DJ8	26	24.66	8U	8L	27	38	1 1/64	27/32	25/32	6	24	12	372
26DJ9	26	24.69	9U	9L	27	38	1 1/64	7/8	13/16	6	24	14	450
26DJ10	26	24.70	10U	10L	27	38	1 1/64	57/64	27/32	6	24	15	498
26DJ11	26	24.70	11U	11L	27	38	1 1/64	59/64	7/8	7	24	17	568
28DJ7	28	26.67	7U	7L	30	41	1 1/64	7/8	51/64	6	24	12	411
28DJ8	28	26.66	8U	8L	30	41	1 1/64	7/8	13/16	6	24	13	434
28DJ9	28	26.69	9U	9L	30	41	1 1/64	57/64	27/32	6	24	15	525
28DJ10	28	26.70	10U	10L	30	41	1 1/64	59/64	7/8	6	24	16	582
28DJ11	28	26.70	11U	11L	30	41	1 1/64	61/64	57/64	7	24	18	663
30DJ8	30	28.66	8U	8L	32	43	1 1/64	57/64	27/32	6	24	13	502
30DJ9	30	28.69	9U	9L	32	43	1 1/64	59/64	7/8	6	24	15	607
30DJ10	30	28.70	10U	10L	32	43	1 1/64	61/64	7/8	6	24	17	672
30DJ11	30	28.70	11U	11L	32	43	1 1/64	61/64	59/64	7	24	19	766
32DJ9	32	30.69	9U	9L	34	45	1 1/64	61/64	57/64	6	24	16	694
32DJ10	32	30.70	10U	10L	34	45	1 1/64	63/64	59/64	7	24	17	769
32DJ11	32	30.70	11U	11L	34	45	1 1/64	63/64	61/64	7	24	19	876

*Steel for DJ-Series joist chords and webs is tested in accordance with "Section 3 Materials" of the SJI Specifications for Open Web Steel Joists, J- and H-Series (36,000 psi minimum yield strength).

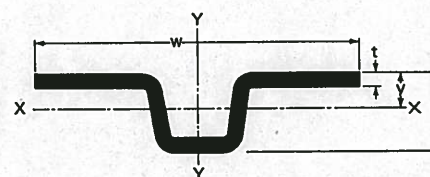
**The approximate joist weights per linear foot shown in these tables include accessories. Such weights are shown only for the convenience of the designer. They cannot be used in figuring prices or determining shipping weights.

***See page 7 for computation of deflections due to uniform loading.

These joists are manufactured with parallel top and bottom chords only.

Chord properties

Sec. No.	Area sq. in.	t in.	d in.	y in.	w in.	X-X Axis		Y-Y Axis		Sec. No.
						I	r	I	r	
7U	1.243	1/32	1.719	.67	4.05	.41	.57	1.39	1.06	7U
8U	1.406	1/4	1.750	.68	4.09	.48	.58	1.61	1.07	8U
9U	1.546	1/4	1.750	.63	4.65	.52	.58	2.28	1.21	9U
10U	1.725	19/64	1.797	.67	4.37	.60	.59	2.27	1.15	10U
11U	2.011	5/16	1.813	.63	5.03	.69	.58	3.53	1.32	11U
7L	1.078	3/16	1.688	.66	4.04	.35	.57	1.18	1.05	7L
8L	1.078	3/16	1.688	.66	4.04	.35	.57	1.18	1.05	8L
9L	1.406	1/4	1.750	.68	4.09	.48	.58	1.61	1.07	9L
10L	1.546	1/4	1.750	.63	4.65	.52	.58	2.28	1.21	10L
11L	1.725	19/64	1.797	.67	4.37	.60	.59	2.27	1.15	11L



1972-ARMCO-SHEFFIELD